

Hazardous Waste Determination Flowchart



Robert A. Clay, P.E.

Hazardous Materials Compliance Officer (HMCO)

Lincoln University Police Department

Environmental Health & Safety (EHS)

<http://www.lincolnu.edu/web/police-department/ehs>

Hazardous Waste Determination Flowchart

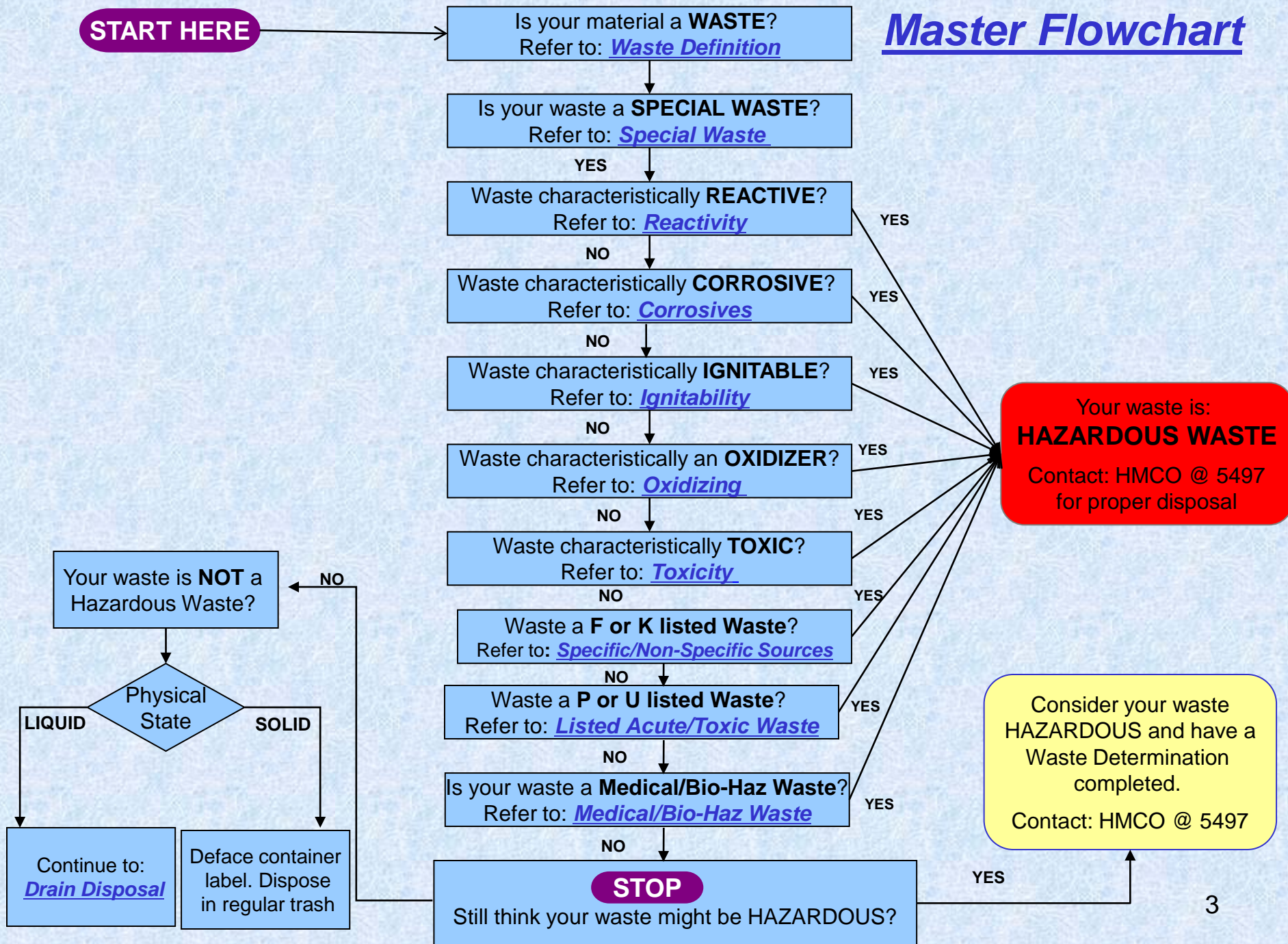


All underlined links will take you to a specific page that contains more information on the waste determination process. The information contained in this flowchart is what EHS uses to make its waste determinations.

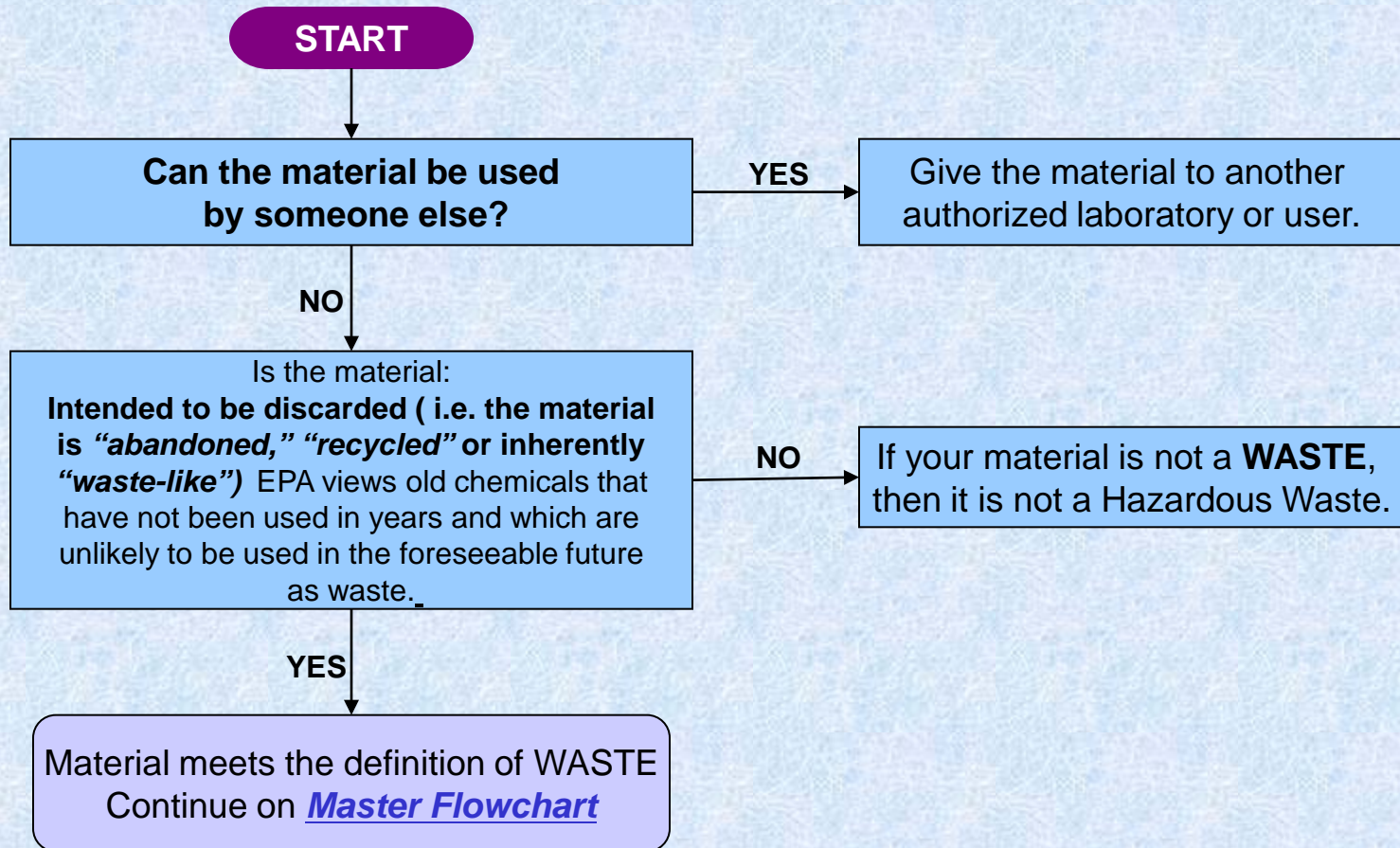
Please note the Master Flowchart link at the bottom of each page that allows you to restart your waste determination process if necessary

START HERE

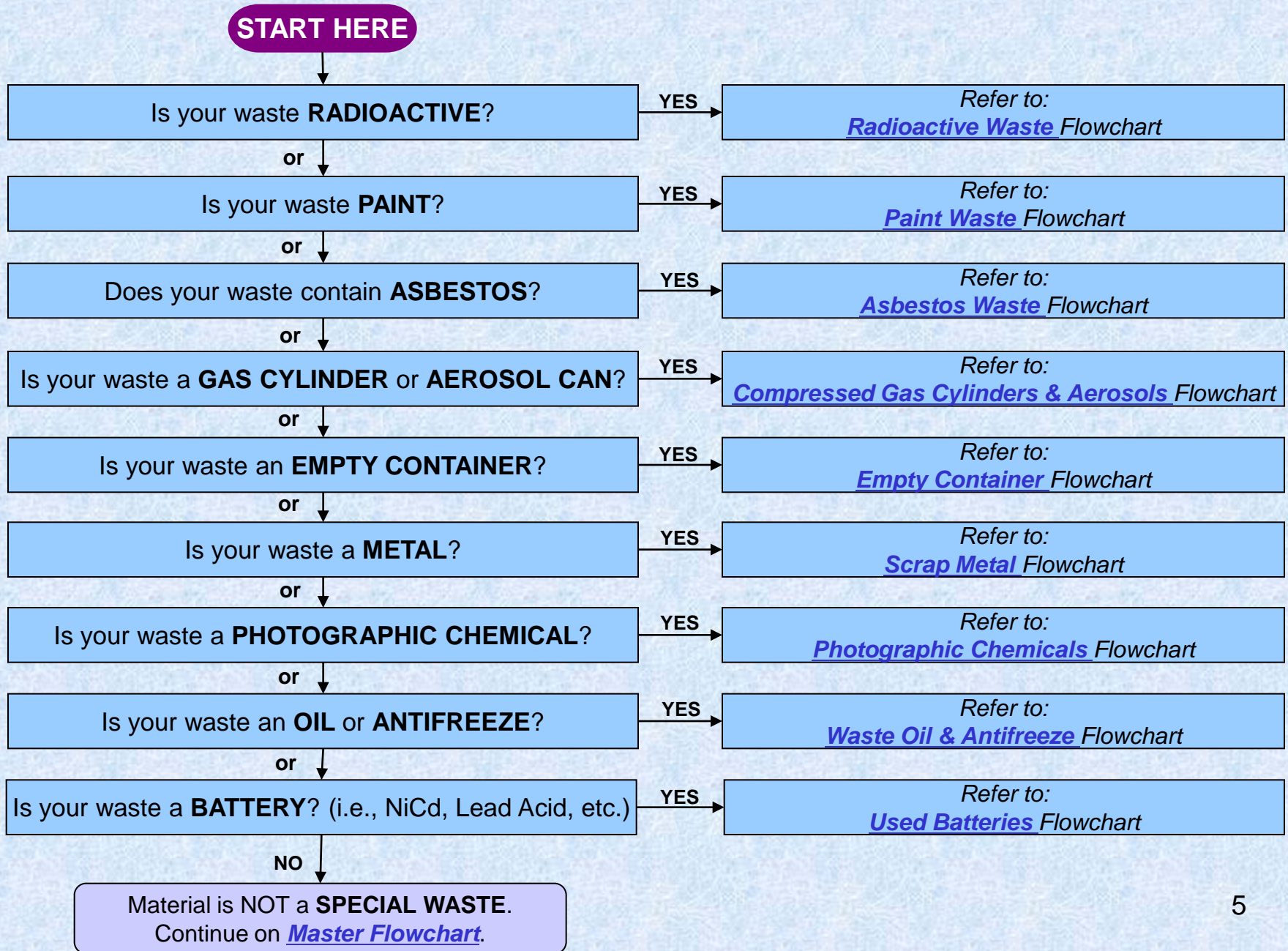
Master Flowchart



Waste Definition

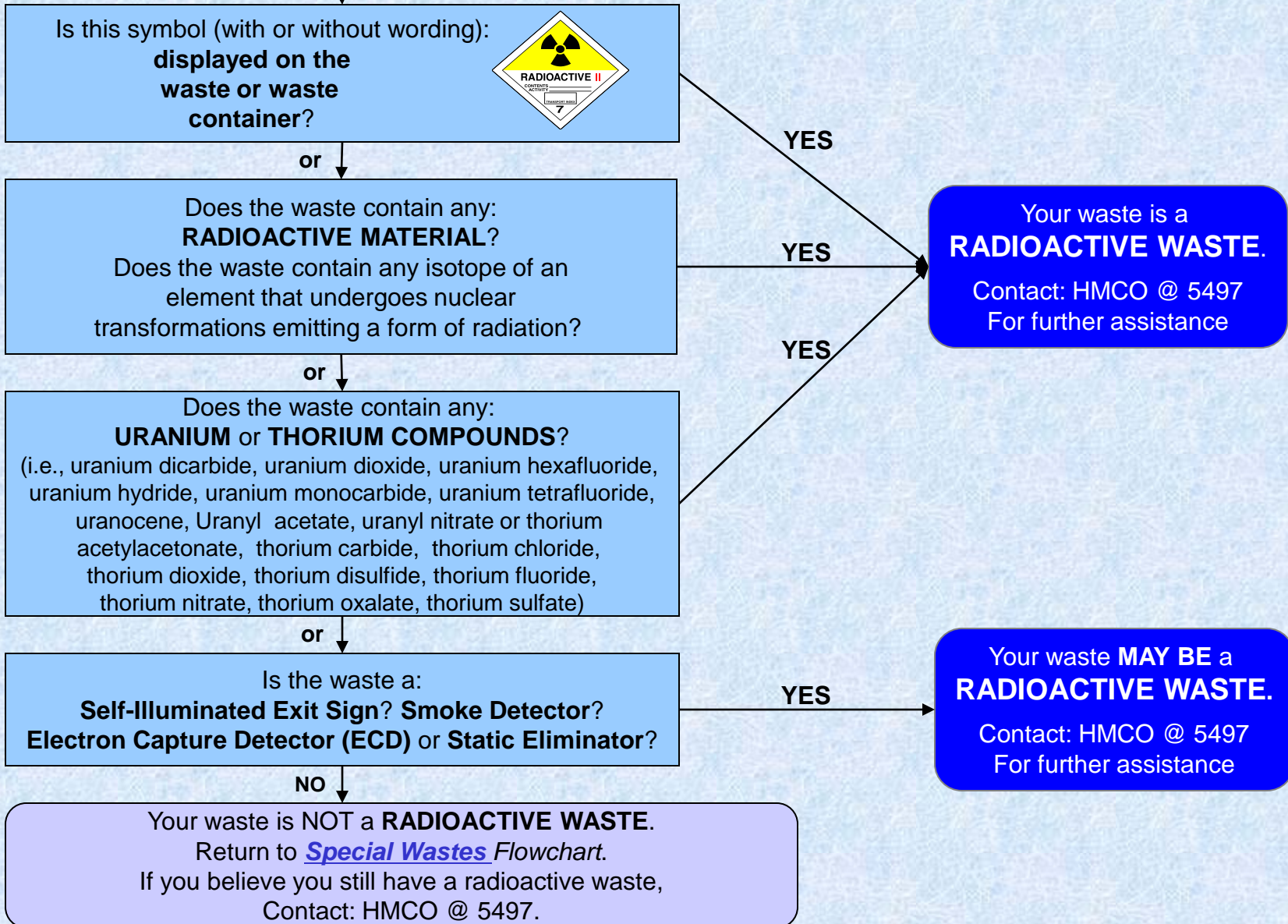


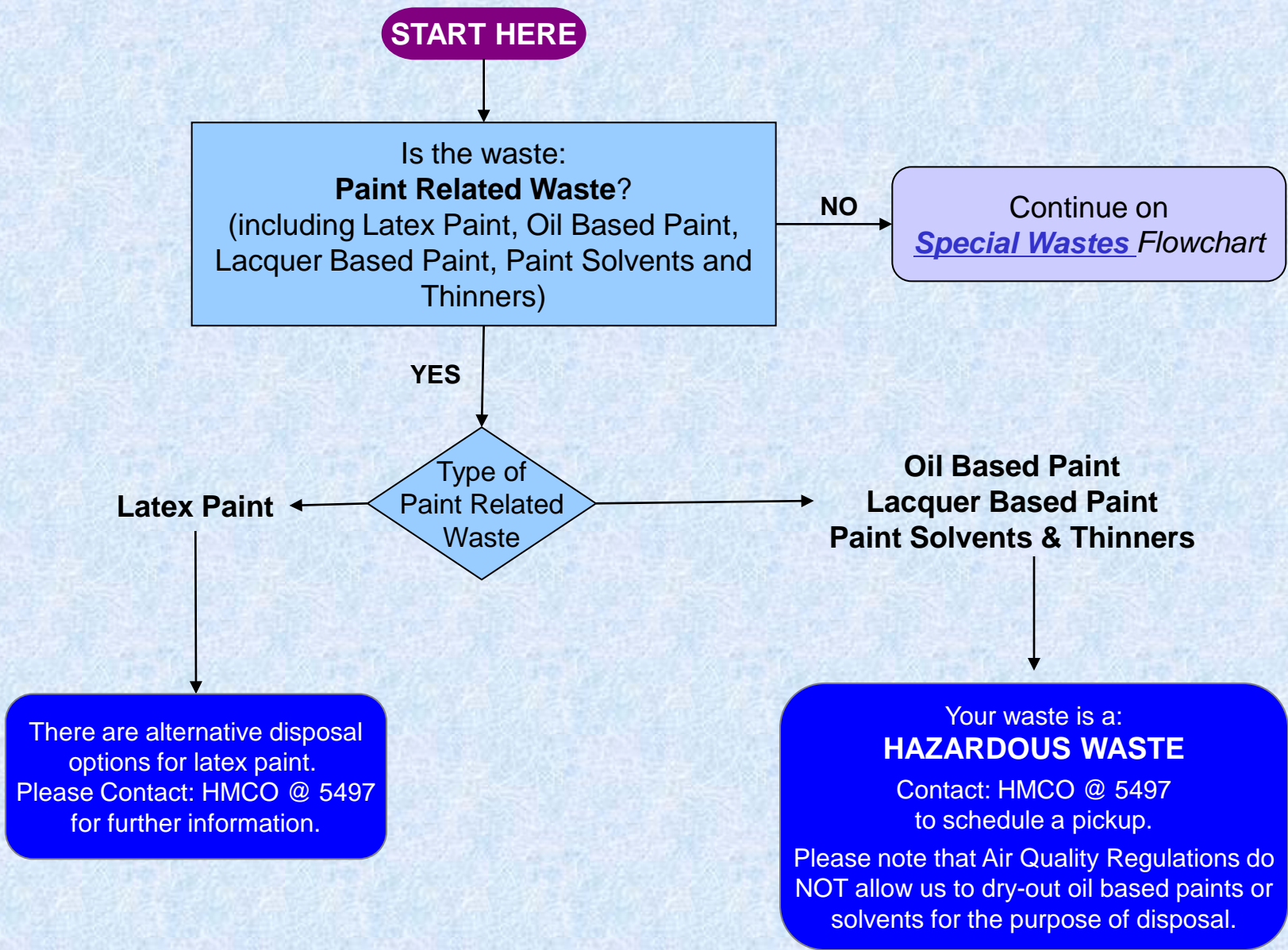
Special Waste



Radioactive Waste

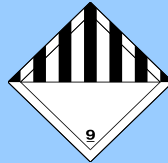
START HERE





START HERE

Does the waste:
Contain > 1% Asbestos?



Examples of Materials Commonly
Containing Asbestos (but not limited to):

- Sheet Rock Taping and Joint Compound
- Fire Door Core Material
- Roofing Felt
- Floor Tile and Mastic
- Transite Sheets (Cementitious Panels)
- Sprayed-on Ceiling Materials
- Boiler Insulation
- Pipe Insulation
- Brake Pads
- Clutch Pads
- Gaskets
- Electrical Wire Insulation
- Thermal Insulation on Electrical Appliances

YES

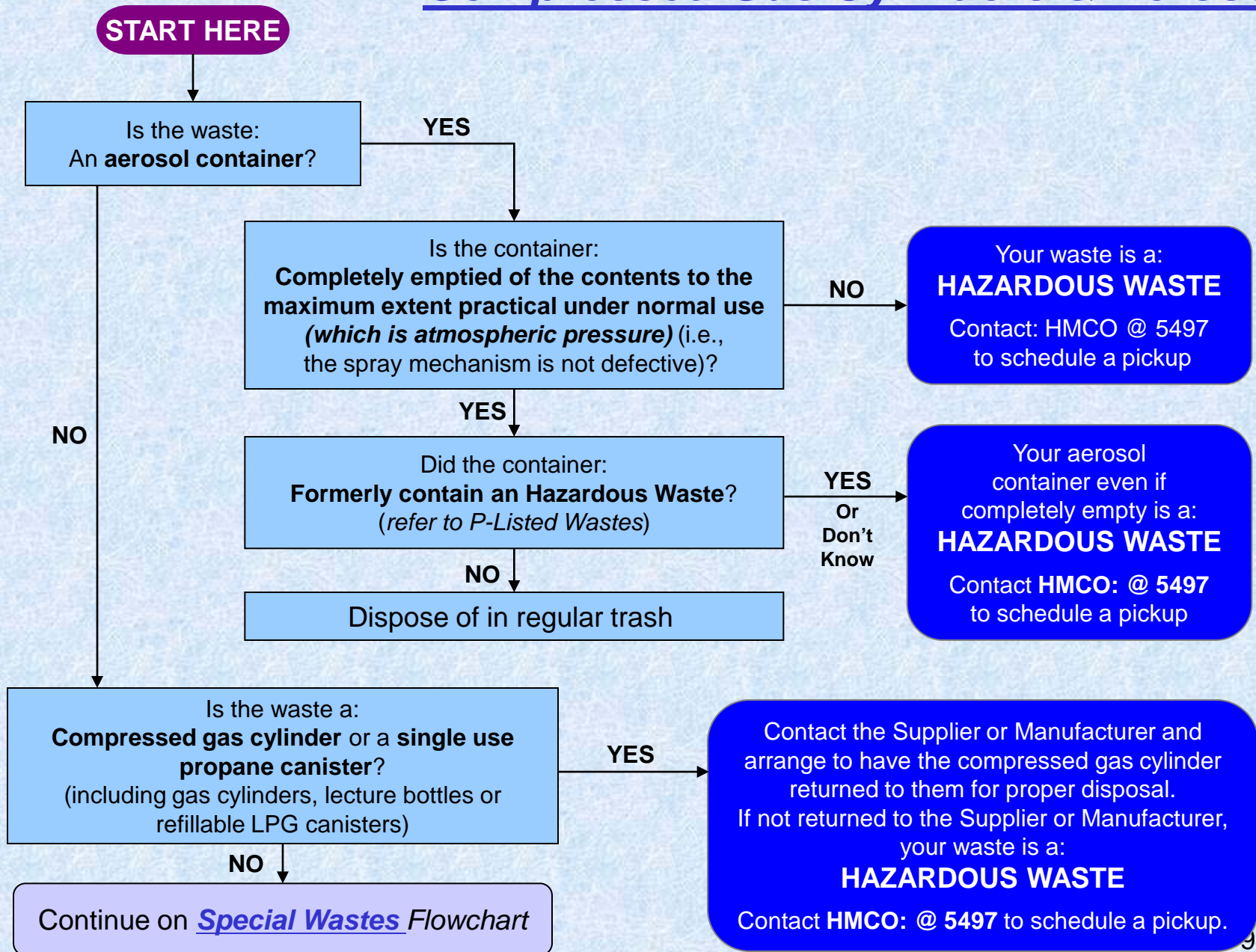
Your waste is a:
HAZARDOUS WASTE

Contact: HMCO @ 5497
to schedule a pickup

NO

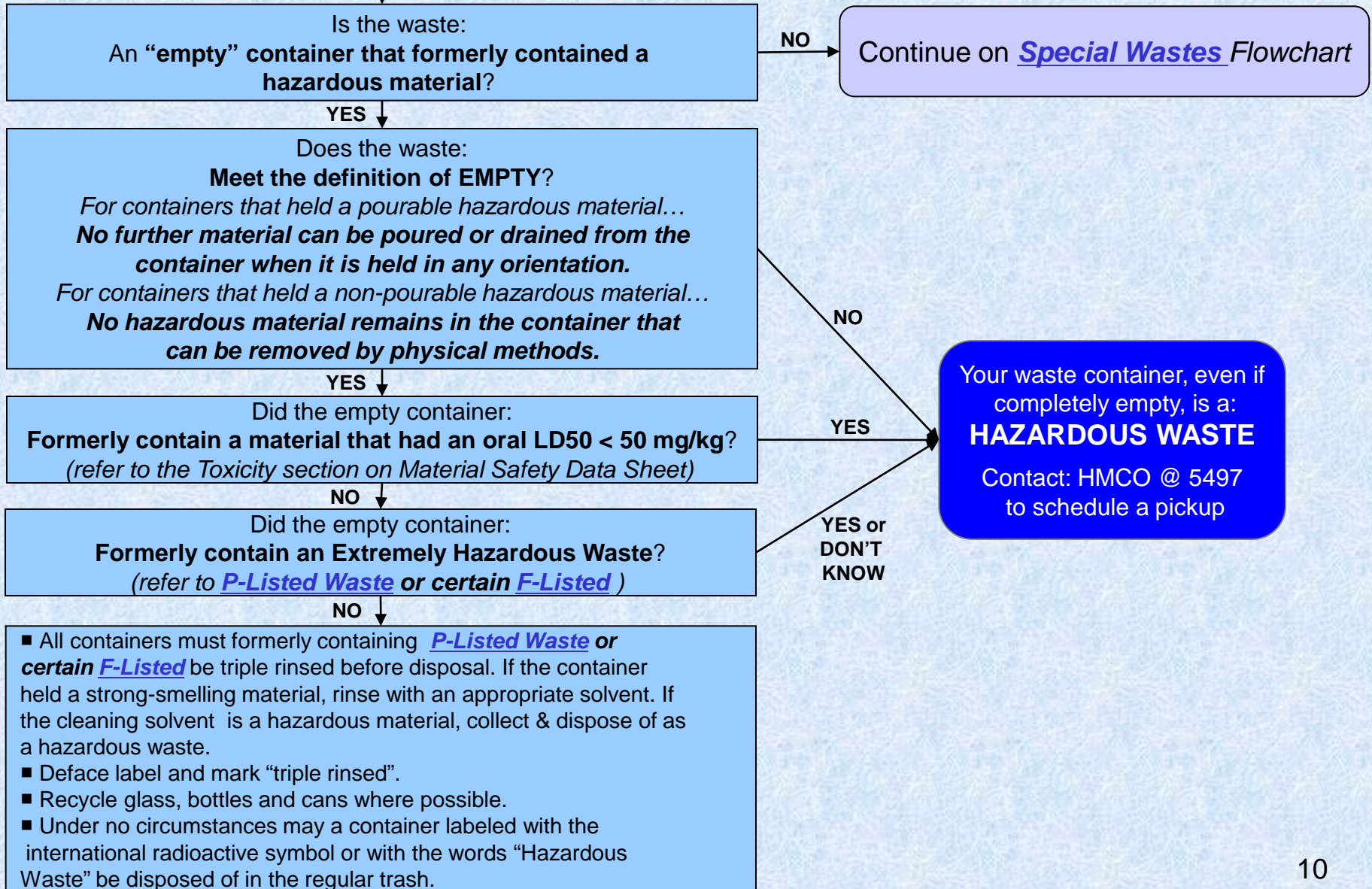
Continue on [Special Wastes](#) Flowchart

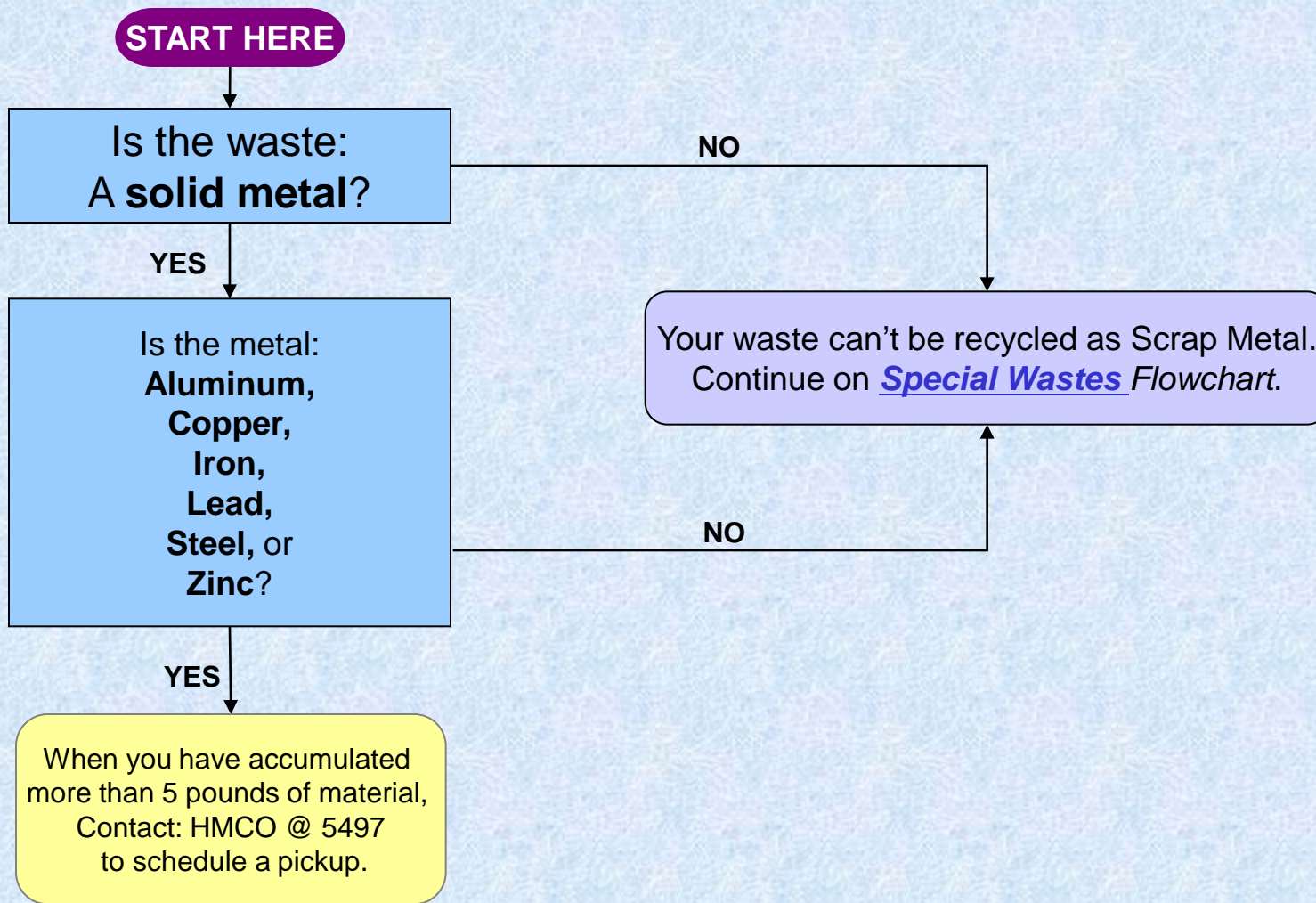
Compressed Gas Cylinders & Aerosols



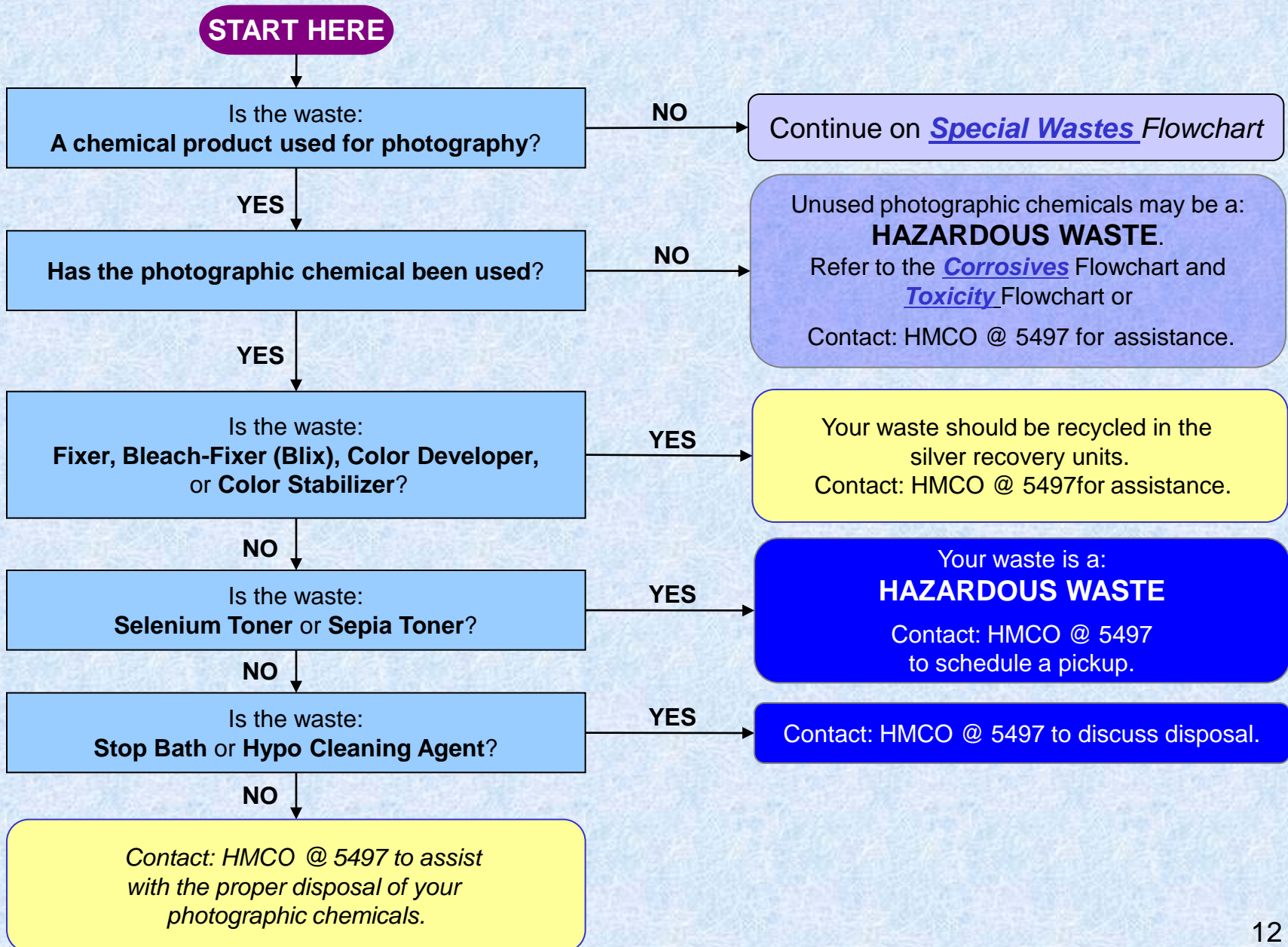
Empty Containers

START HERE





Photographic Chemicals



Waste Oil & Antifreeze

START HERE

Is the waste:
an **Oil** or **Antifreeze**?

YES

Is your waste:

- Motor Oil
 - Automatic Transmission Fluid
 - Power Steering Fluid
 - Diesel Fuel
 - Gear Oil
 - Turbine Engine Oil
 - Hydraulic Oil
 - Fuel Oil
 - Kerosene (#3, #4, & #6)
- Oils can NOT be disposed down the drain
(even if they are not hazardous waste).*

NO

Is your waste?

- Ethylene Glycol based Antifreeze
- Coolant from Chillers / HVAC systems
- Propylene Glycol based Antifreeze (freeze protection > 0o F)

NO

Is your waste?

- Any type of oil contaminated with a hazardous chemical
- Chlorinated Solvents
- Metal working fluids
- Degreasing solvents
- Freon and Freon contaminated refrigeration oil
- Naptha
- Transformer Oil
- Brake Fluid
- Radiator Flush
- Deicers
- Oily Water
- Antifreeze with a freeze protection above 0o F

NO

Continue on [Special Wastes](#) Flowchart

YES

Your waste should be recycled .
Contact: HMCO @ 5497 for assistance

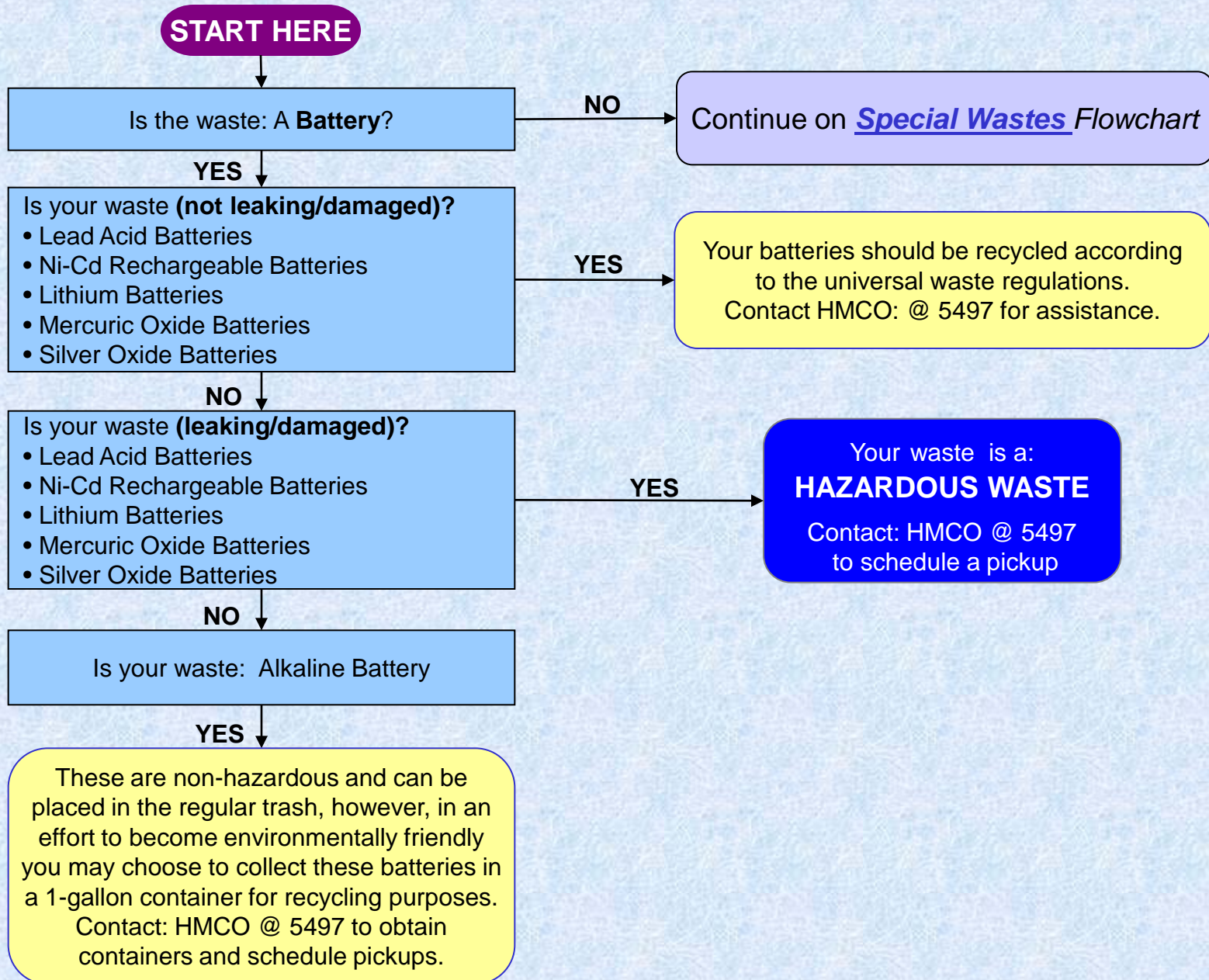
YES

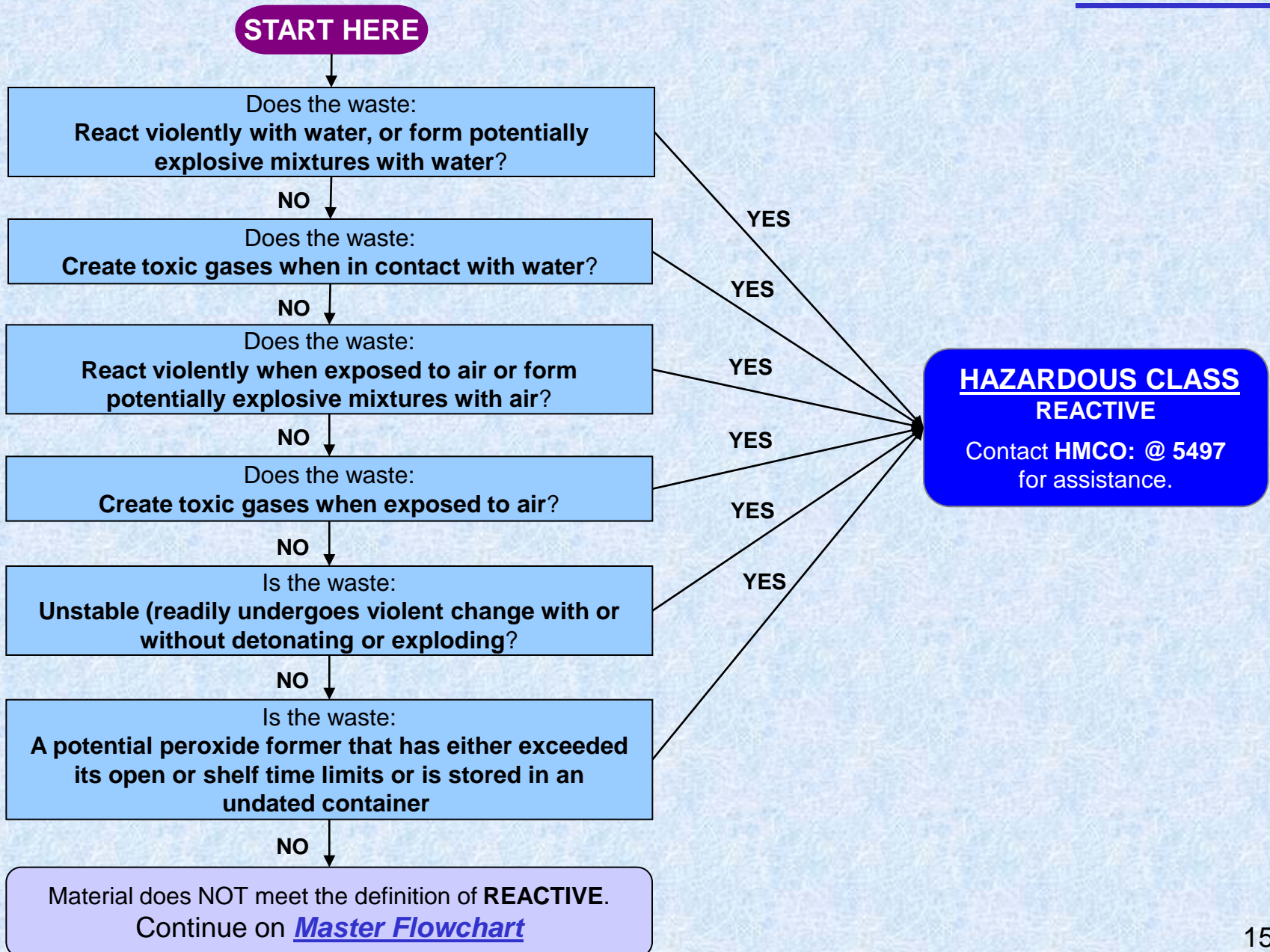
YES

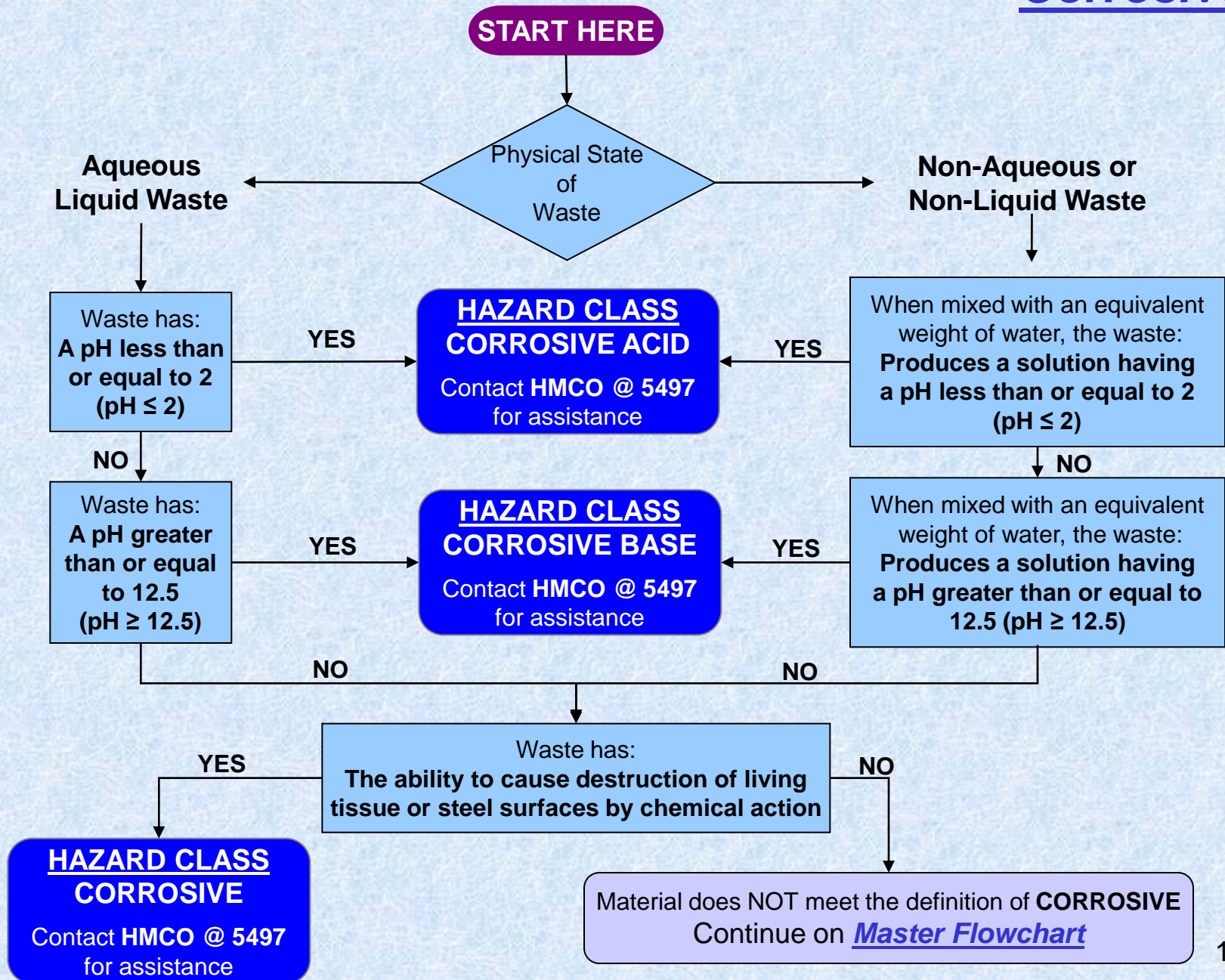
Your waste is a:
HAZARDOUS WASTE

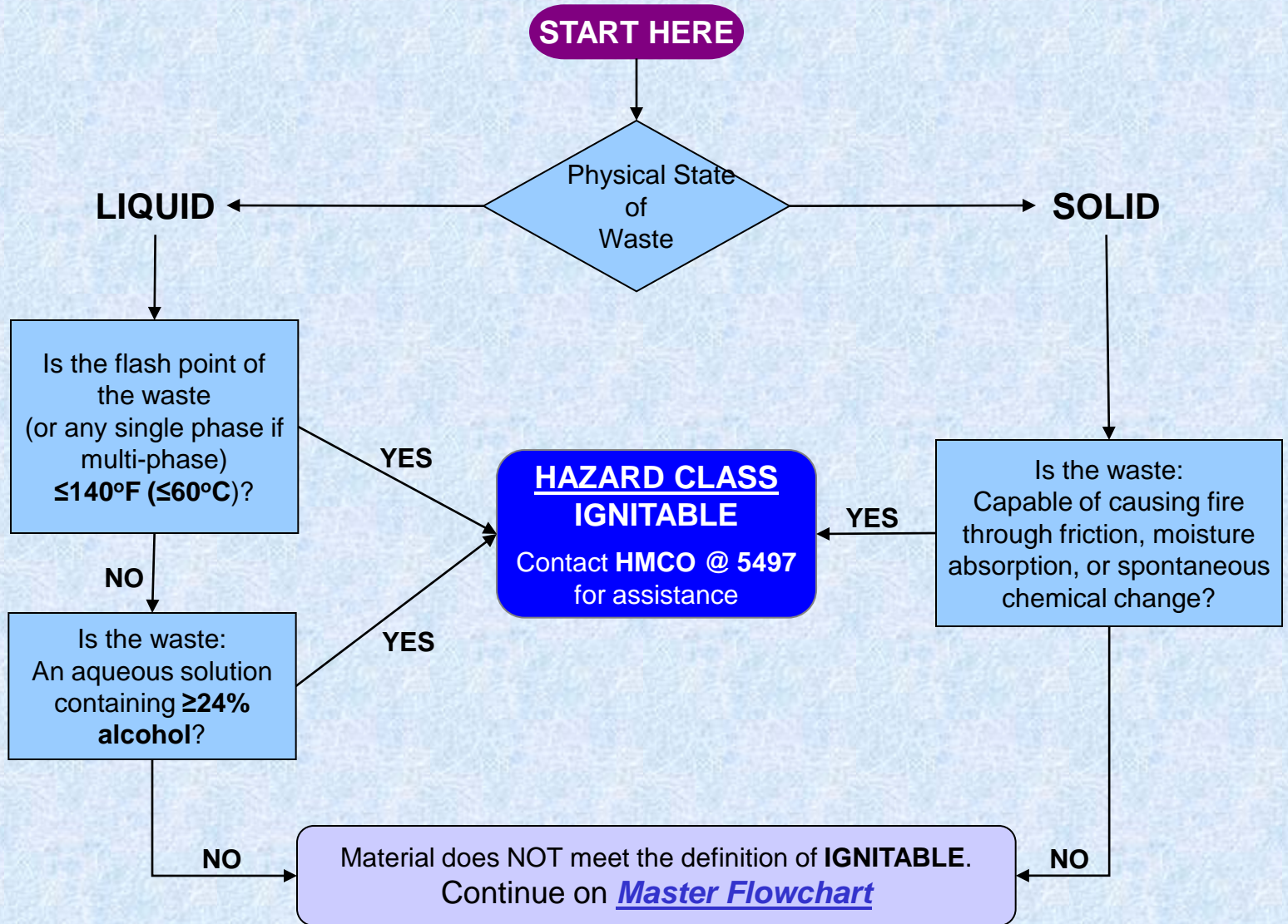
Contact: HMCO @ 5497
to schedule a pickup

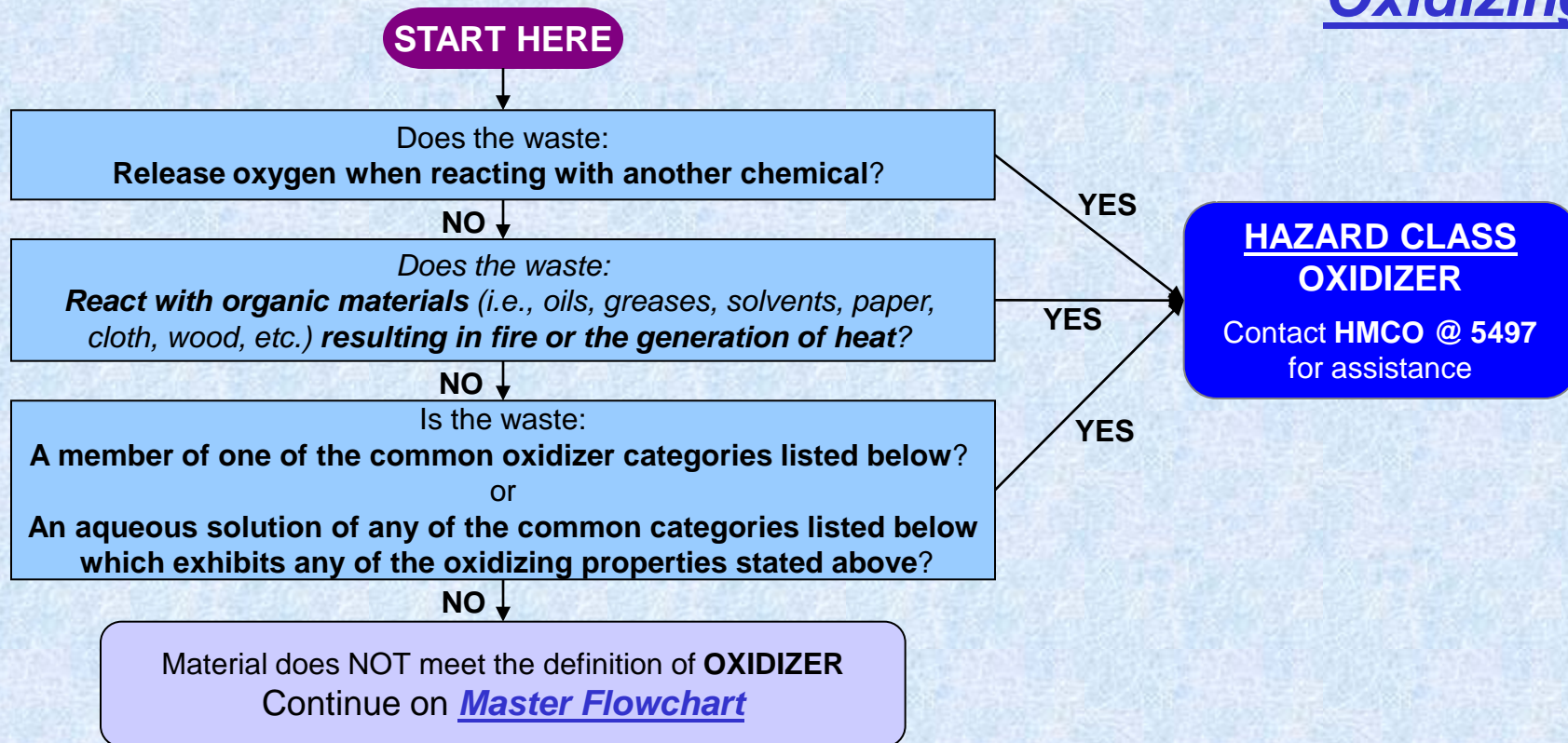
Used Batteries











Examples:

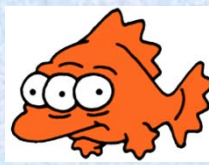
SOLIDS

- Bismuthates
- Bromates
- Chlorates
- Chlorites
- Chromates
- Chromium trioxide
- Dichromates
- Ferric sulfate
- Ferric chloride
- Ferric trioxide
- Ferricyanides
- Hypochlorites
- Iodates
- Iodine
- Manganese dioxide
- Nitrates
- Perborates
- Perchlorates
- Periodic acid
- Permanganates
- Permanganic acid
- Peroxides
- Persulfates

LIQUIDS

- Bromine
- Chromic acid (pH > 2)*
- Hydrogen peroxide
- Nitric acid (pH > 2)*
- Perchloric acid (pH > 2)*
- Sulfuric acid (pH > 2)*

* Oxidizing mixtures having a pH \leq 2 are classified as corrosive.



Specific/Non Specific Source Waste

START HERE

Is your waste a F- listed Waste?

The F-list (F001-F039), frequently referred to as the non-specific source list, contains spent solvents, electroplating wastes, wastes related to production or treatment of chlorinated hydrocarbons, wood preserving wastes, and certain landfill leachates

YES

NO ↓

Is your waste a K- listed Waste?

The K-list, frequently referred to as the specific source list, contains solid hazardous wastes from certain industries including, but not limited to, chemical manufacturing, ink formulating, petroleum refineries and metal smelting. Laboratories may generate K-listed waste if they accept samples from a K-listed industrial process.

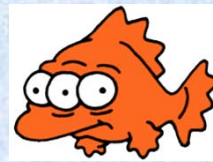
YES

NO ↓

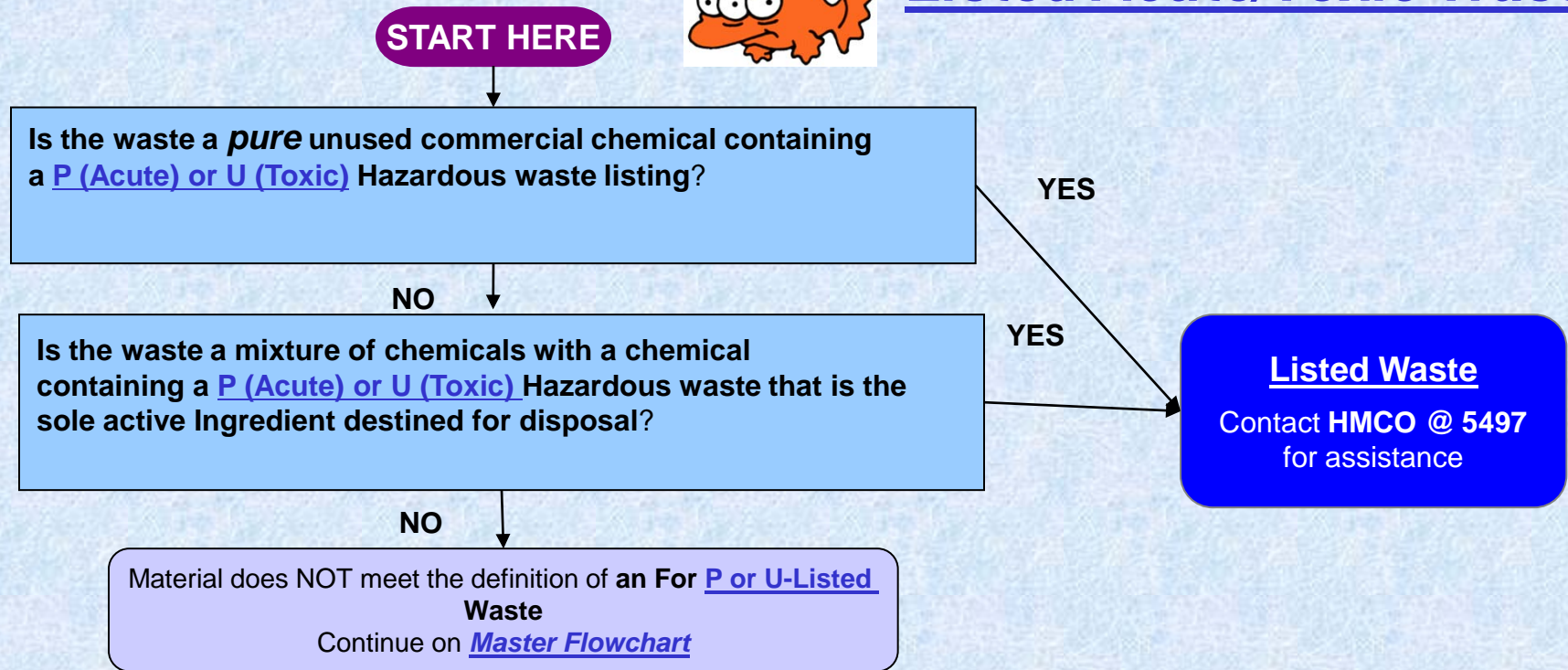
Material does NOT meet the definition of an F or K listed waste
Continue on Master Flowchart

Contact **HMCO @ 5497**
for assistance

*Special attention will be paid to **F020, F021, F022, F023, F026, & F027** wastes in this category since only 1 quart of the (acute) F-listed waste noted in red can be accumulated in a satellite accumulation area at any one time. Also note that if a generator produces >1kg/month of F-listed waste noted in red must register as a large quantity generator. Containers that previously held F-listed waste noted in red must also be triple rinsed to meet RCRA empty standards.*



Listed Acute/Toxic Waste



Special attention will be paid to any wastes in this category since only 1 quart of an (acute) p-listed waste can be accumulated in a satellite accumulation area at any one time. Also note that if a generator produces >1kg/month of P-listed waste they must register as a large quantity generator. Containers that previously held P-listed wastes must also be triple rinsed to meet RCRA empty standards.



Toxicity

START HERE

- Waste displays the toxicity characteristic if it **exceeds certain concentration levels** using specified test methods.
- The toxicity characteristic leaching procedure (TCLP) is the specified test method for determining if a waste is a toxic hazardous waste.
- The TCLP simulates the conditions in a landfill and then analyzes the concentrations of specifically listed chemicals and heavy metals that could potentially leach into the groundwater.
- Examples of the most common toxic materials, their regulatory limits, and their corresponding waste codes are listed right.

Material does NOT meet the definition of **TOXICITY**.
Continue on [Master Flowchart](#)

Toxic Hazardous Waste

Arsenic	5.0 ppm	D004
Barium	100 ppm	D005
Benzene	0.5 ppm	D018
Cadmium	1.0 ppm	D006
Chloroform	6.0 ppm	D022
Chromium	5.0 ppm	D007
Lead	5.0 ppm	D008
Mercury	0.2 ppm	D009
Methyl Ethyl Ketone (MEK)	200 ppm	D035
Selenium	1.0 ppm	D010
Silver	5.0 ppm	D011
Tetrachloroethylene	0.7 ppm	D039
Trichloroethylene	0.5 ppm	D040
Vinyl Chloride	0.2 ppm	D043
Chloroform	6.0 ppm	D022

*NOTE: The 8 compounds that appear in **boldface** are referred to as the “RCRA 8 metals”*

[**Click here for Complet list of D – Listed Hazardous Waste 40 CFR 261.24 \(Toxic\)**](#)



Medical/Bio-Hazardous Waste

START HERE

Is the waste:
A fluid blood or blood product?

NO

Is the waste:
A cerebrospinal fluid, synovial fluid, pleural fluid, pericardial fluid, peritoneal fluid, amniotic fluid, saliva in dental procedures, any body fluid visibly contaminated with blood, biological materials in labs (etiologic), unfixed human tissue or organ?

NO

Is the waste:
A culture of an agent infectious to humans?

NO

Is the waste:
Generated from the treatment or immunization of animals or humans?

NO

Is the waste:
Generated by research involving live or attenuated pathogenic organisms?

NO

Is the waste:
Used or unused sharps (i.e. hypodermic needle, scalpel, razor blades, pasteur pipettes), or any glass or plastic) contacted with infectious materials?

NO

Is the waste:
Generated from work involving *recombinant DNA*?

NO

Is the waste:
Blood, tissue samples, organs, cadavers from infected experimental animals?

NO

Is the waste:
Chemotherapy Wastes (Wastes with a trace (<15cc) of chemo-waste or anti-neoplastic agents?

NO

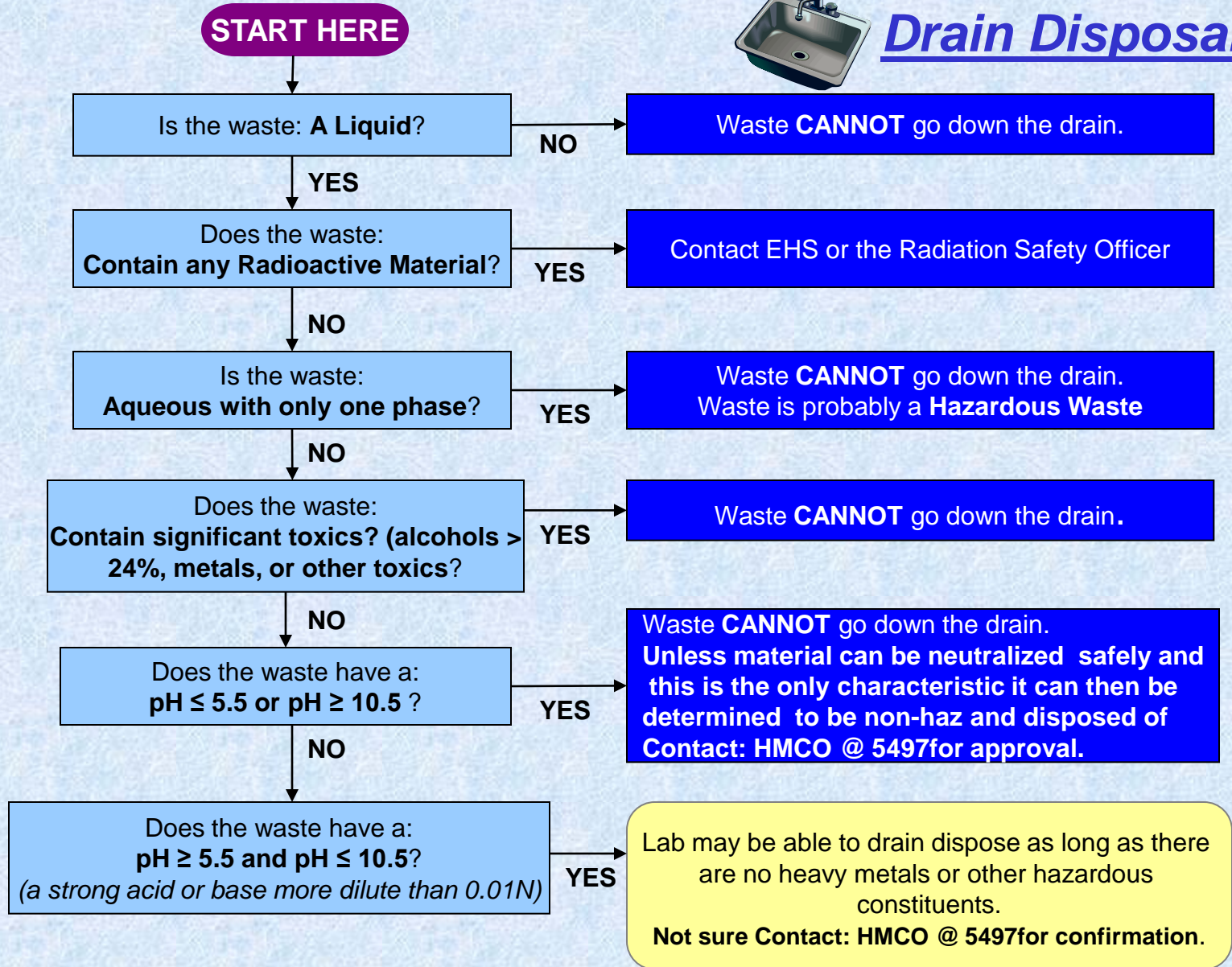
YES
YES
YES
YES
YES
YES
YES
YES

Your Waste is a Regulated Medical/biohazardous Waste.
Contact: HMCO @ 5497 for further assistance

Your waste is NOT a MEDIACL WASTE.
Continue on **MASTER FLOWCHART**



Drain Disposal



Go back to [MASTER FLOWCHART](#)